



Key Performance Features:

- High Energy Neodymium Magnets
- Peak Torque to 1700 oz-in
- Excellent Torque to Weight Ratio
- Encoder Ready
- Low Voltage High Performance Design is Available
- 12-120 VDC Typical

S28

BRUSHED
SERVO
MOTOR
SERIES

Motor Characteristics

FRAME SIZE	STACK LENGTH	PEAK STALL TORQUE (T _p) OZ-IN	CONT. STALL TORQUE (T _c) OZ-IN	ROTOR INERTIA (J _m) OZ-IN-SEC ²	FRICTION TORQUE (T _f) OZ-IN	THERMAL RESISTANCE (RM) °C/WATT	MAX RECOMMEND SPEED RPM	MAX WINDING TEMP. C°	POWER RANGE W	WEIGHT LB
S28	-- 100	900	80	0.01	6	3.7	4000	155	80	3
S28	-- 200	1300	130	0.02	7	2.9	4000	155	150	4
S28	-- 300	1500	200	0.025	8	2.3	4000	155	200	5.5
S28	-- 400	1700	250	0.04	9	1.8	4000	155	250	6.8

Sample Windings

CONSULT MAGMOTOR APPLICATION STAFF FOR OTHER AVAILABLE WINDINGS

	S28 -- 100				S28 -- 200				S28 -- 300				S28 -- 400			
	E	G	I	K	E	G	I	K	E	G	I	K	E	G	I	K
Torque Constant (Kt) oz-in/amp	8.8	14.1	22.9	36.4	17.5	27.9	44.8	71.1	27.5	40.6	65.6	104.1	34.4	56.1	89.0	134.6
Voltage Constant (Ke) Volts/Krpm	6.50	10.4	17.0	26.9	13.0	20.6	33.1	52.6	19.3	30.0	48.5	77.0	25.4	41.5	65.8	99.5
Term. Resistance (Rt) Ohms (cold)	0.5	0.9	1.3	3.4	0.8	2.0	3.4	7.0	0.8	1.4	4.5	9.8	0.83	2.2	5.5	12.2
Peak Current (A) Amps	60	36	23	15	60	36	23	15	60	36	23	15	60	36	23	15
Cont. Current (A) Amps	9	5	3	2	9	5	3	2	9	5	3	2	9	5	3	2

VALUES AS LISTED ARE TEST CONDITIONS, ACTUAL RESULTS MAY VARY

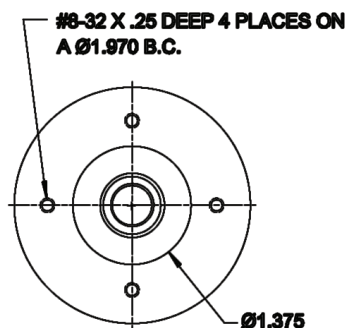
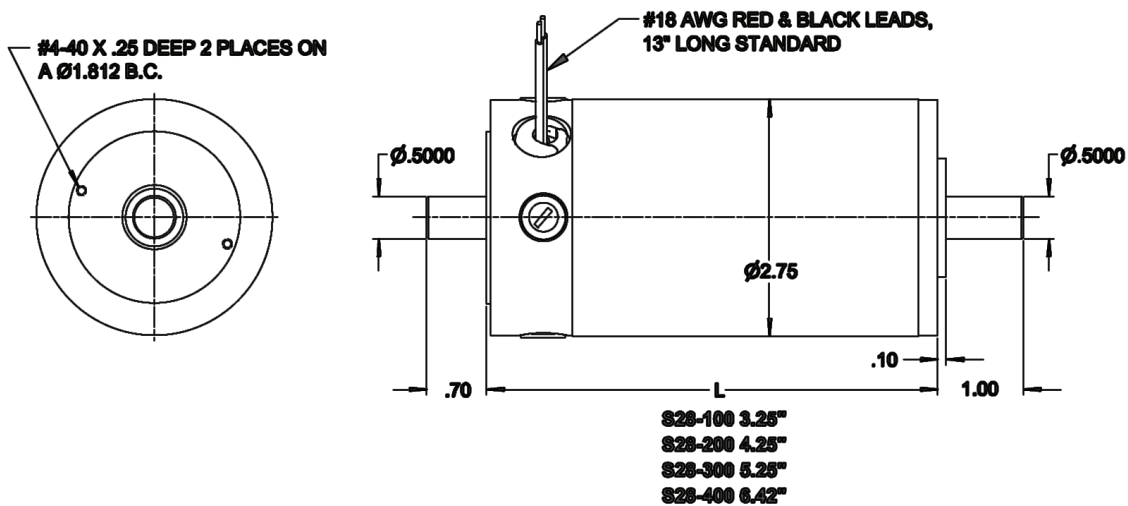
▼ S28 Series Options

- Optical Encoders
- Tachometers, Brakes and Gear Boxes
- Custom Cables and Connectors
- IP 65 Sealing
- NEMA 34 Flange Mounting
- For more options, see magmotor.com custom solutions, or call us.

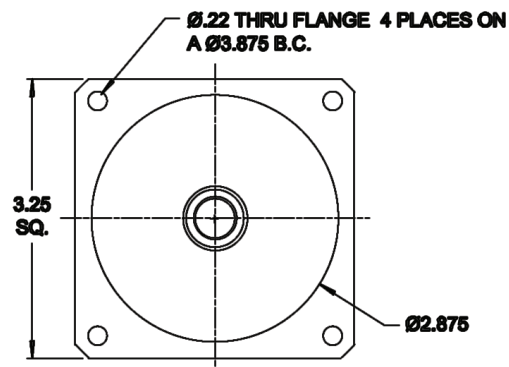
▼ Typical Applications

- Packaging Machines
- Machine Tools
- Coil Winders
- Electric Vehicles
- Material Handling Equipment
- Textile Machines

Magmotor[™]
AUS Hybrid Company



OPTIONAL
ROUND FACE MOUNT



NEMA 34
FLANGE MOUNT